

PROPOSED ELEVATION



# PALLADIAN 2017

# PALLADIAN 207. AN OVERVIEW



IN THE HEART OF BUSINESS HUB



PROXIMITY TO RAILWAY & METRO STATION



BEAUTIFUL GLASS FAÇADE



LOCATED ON ANDHERI - GHATKOPAR LINK ROAD



COFFEE SHOP & WAITING LOUNGE



4 PASSENGER ELEVATORS  
2 STAIRCASES



PROXIMITY TO INTERNATIONAL AIRPORT



PROXIMITY TO EEH



CAR PARK FACILITY



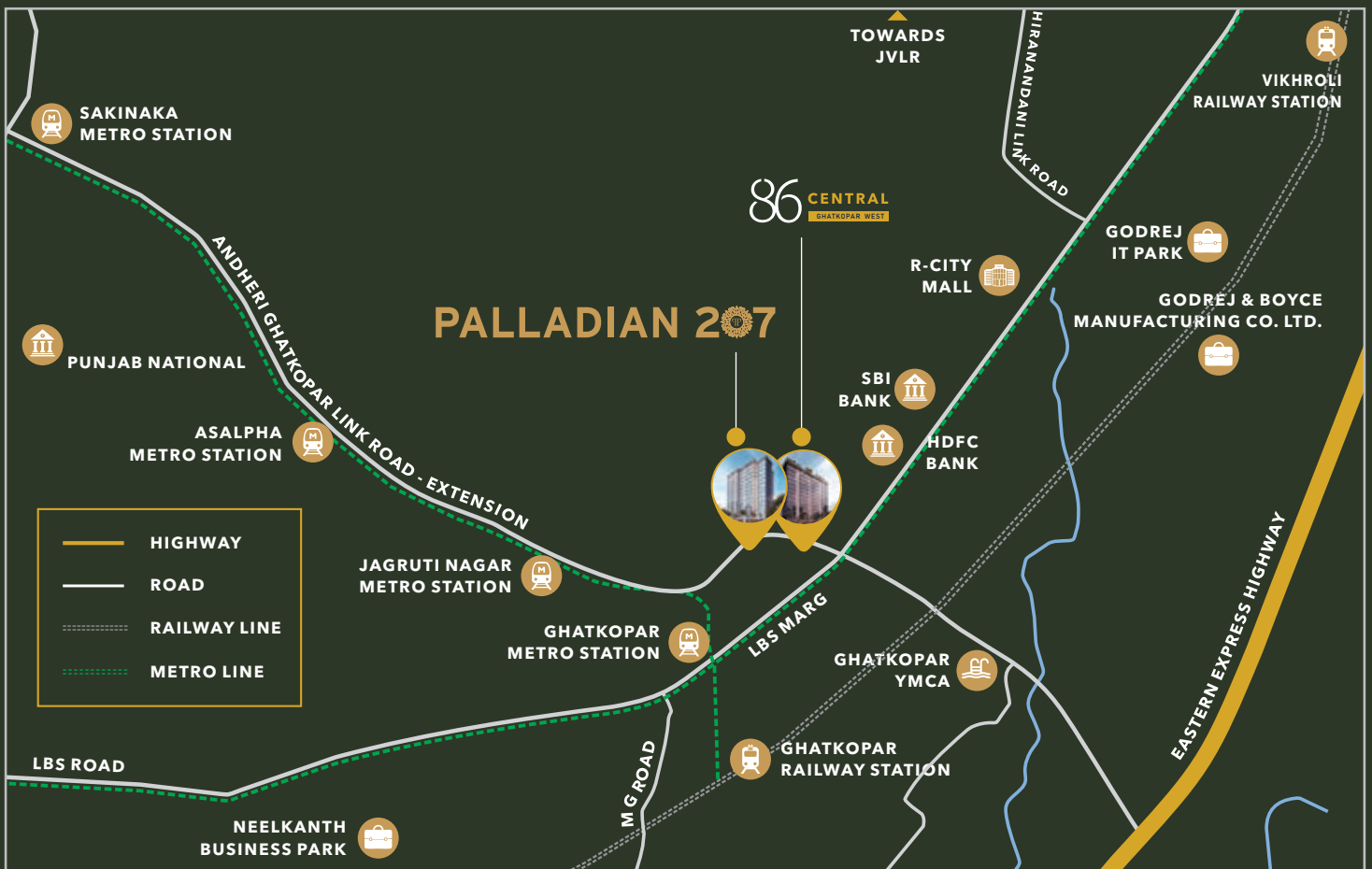
VITRIFIED FLOORING



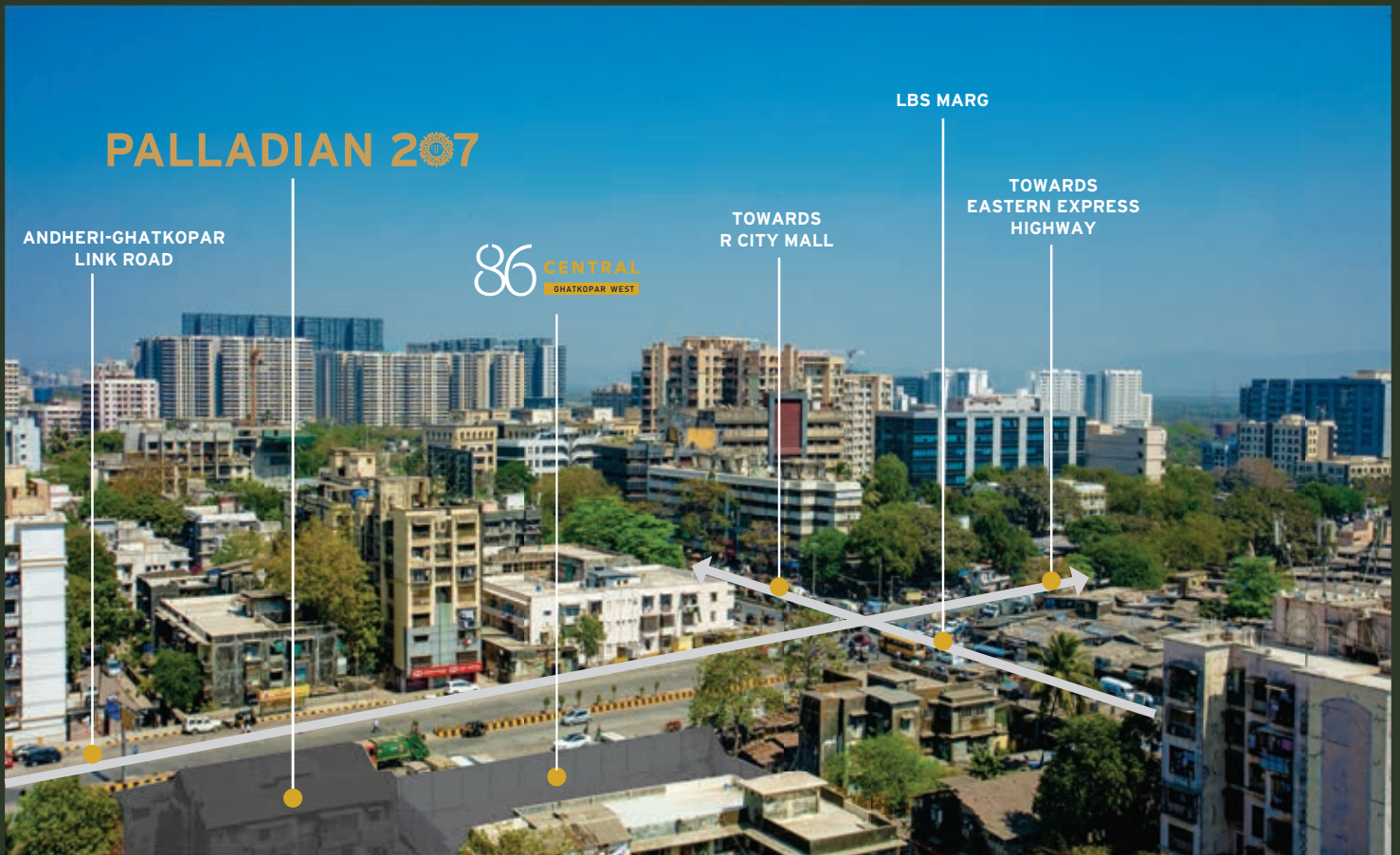
24X7 CCTV SECURITY



SMARTLY DESIGNED OFFICE SPACES



# ACTUAL VIEW



## STRATEGICALLY LOCATED, EASILY ACCESSIBLE

Connectivity gives growing businesses an added advantage.

Explore the power of easy accessibility with a business situated at the apex of connectivity.

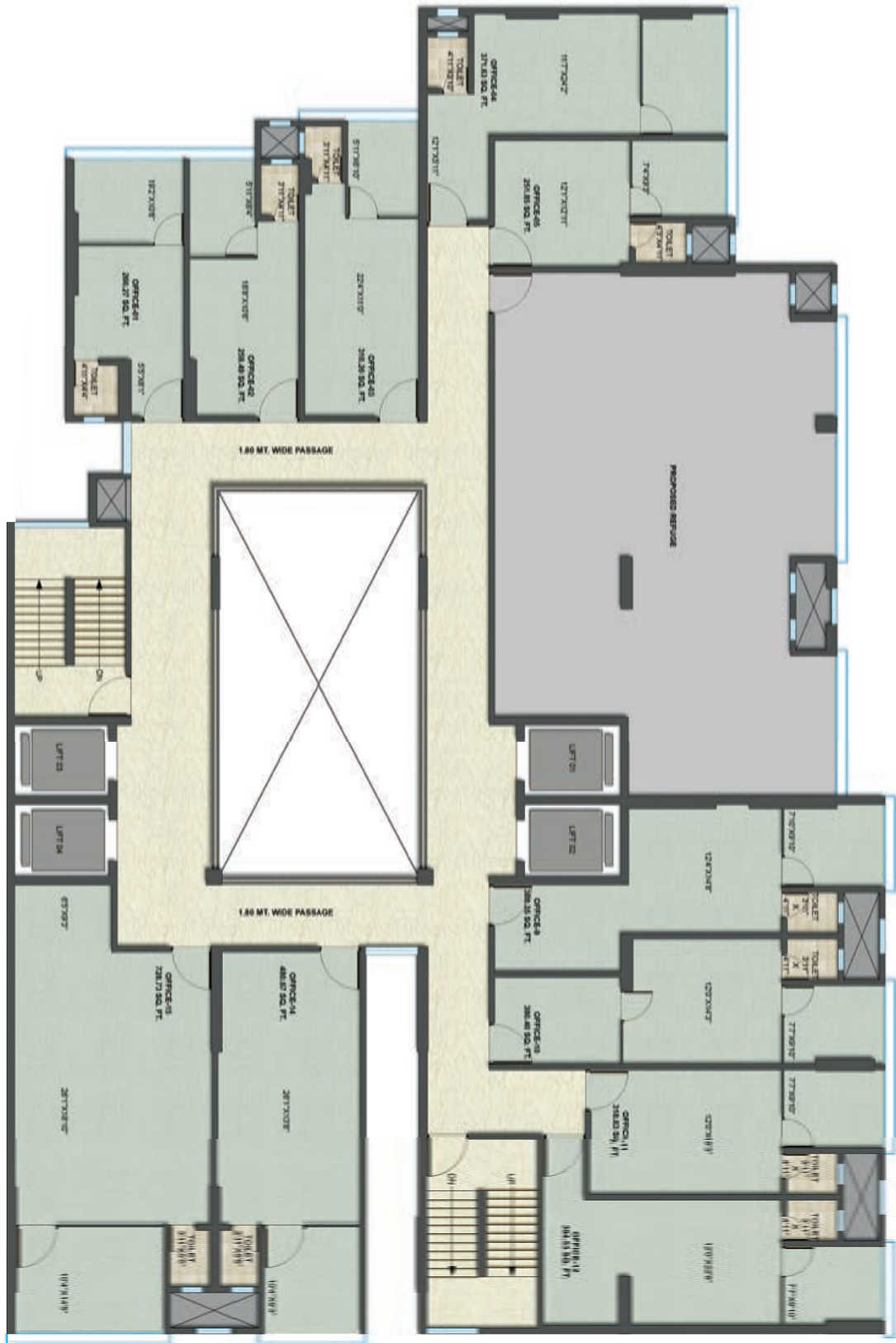
Palladian 207 is a short commute away from Mumbai's key business hubs. Located on the Andheri-Ghatkopar Link Road, you can reach anywhere faster.

- 05 MINS FROM GHATKOPAR RAILWAY & METRO STATION
- 10 MINS FROM EASTERN EXPRESS HIGHWAY
- 25 MINS FROM INTERNATIONAL AIRPORT
- 28 MINS FROM BANDRA KURLA COMPLEX
- 30 MINS FROM SEEPZ, MIDC & POWAI

# TYPICAL FLOOR PLAN 1<sup>st</sup> - 7<sup>th</sup> Floor & 9<sup>th</sup> - 13<sup>th</sup> Floor



# REFUGE FLOOR PLAN 8<sup>th</sup> Floor



# PROJECT HIGHLIGHTS

- 4 HIGH SPEED ELEVATORS & 2 STAIRCASES
- FENG SHUI / VASTU COMPLIANT DESIGN
- THOUGHTFULLY DESIGNED OFFICES
- NATURAL SUNLIGHT FROM GRAND ATRIUM
- COFFEE SHOP & WAITING LOUNGE
- RAIN WATER HARVESTING PITS
- SEWAGE TREATMENT PLANT
- SELF-CONTAINED OFFICE
- FIRE ALARM SYSTEM & EQUIPMENT
- BRANDED BATHROOM & BRANDED ELECTRICAL FITTINGS
- VITRIFIED FLOORING
- EARTHQUAKE RESISTANT RCC STRUCTURE
- OPTIMUM SPACE UTILIZATION
- OPENABLE WINDOW IN EACH OFFICE

## A PROJECT BY




### CORPORATE ADDRESS:

CRYSTAL GROUP (A Mukesh Group Venture)  
1st & 2nd floor, Crystal Shopping Arcade,  
Opp. Surya Nursing Home, Above Manini Jewellers,  
S.V. Road, Santacruz (West), Mumbai, Maharashtra 400054.

### SITE ADDRESS:

PALLADIAN 207  
Andheri - Ghatkopar Link Road,  
Off LBS Road, Near Shreyas Signal,  
Ghatkopar (West), Mumbai, Maharashtra 400086

 The project has been registered via MahaRERA registration number: P51800031122 | website <https://maharera.mahaonline.gov.in> under registered projects.

Disclaimer: All layouts, locations, plans, specifications, designs, elevations, features, amenities, facilities and services mentioned are indicative of the kind of development proposed and its finality is subject to the approval of the respective authorities or as required by the promoter/developer in the interest of continuing improvement, without prior notice or obligation. Tolerance of +/-3% is possible in unit areas on account of design and construction variances. The pictures and perspective views of the premises/building are an artist's impression of the development and for representational purposes only. The details, pictures and images contained in the leaflets, brochures or any other printed material does not constitute an offer and/or contract of any type between the promoter/developer and the recipient. All transactions in this development shall be subject to the terms and conditions of the agreement for sale to be entered into between the parties. All internal dimensions for carpet area are from unfinished wall surfaces. Minor variations up to (+/-)3% in actual carpet areas may occur on account of site conditions /columns /finishes etc. In toilets, the carpet areas are inclusive of ledge walls (if any). Conversion: 1 sq. mtrs. = 10.764 sq. ft. \*T&C Apply.