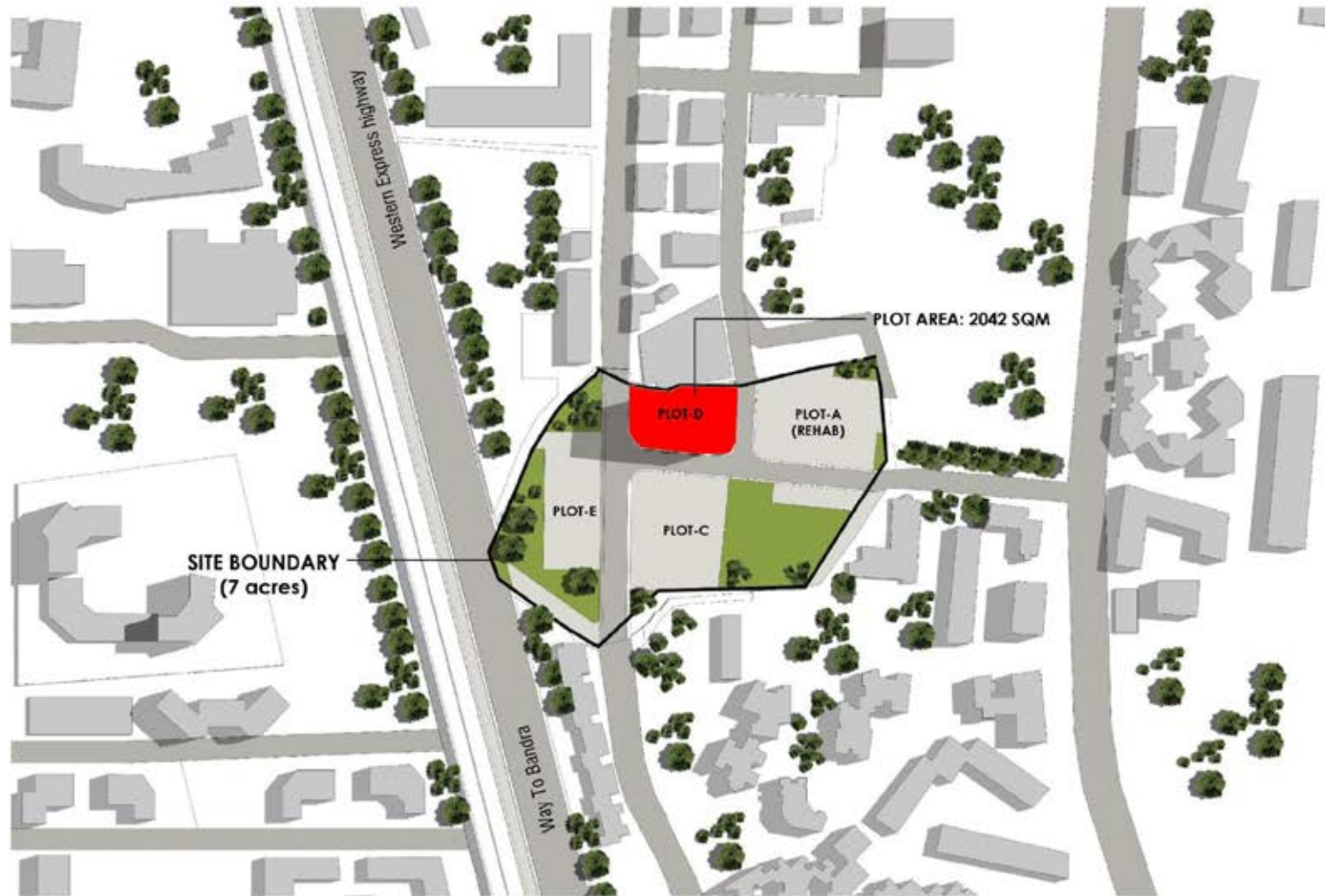


JANGID

ELYSIUM

A project by Imprint Construction Pvt. Ltd.



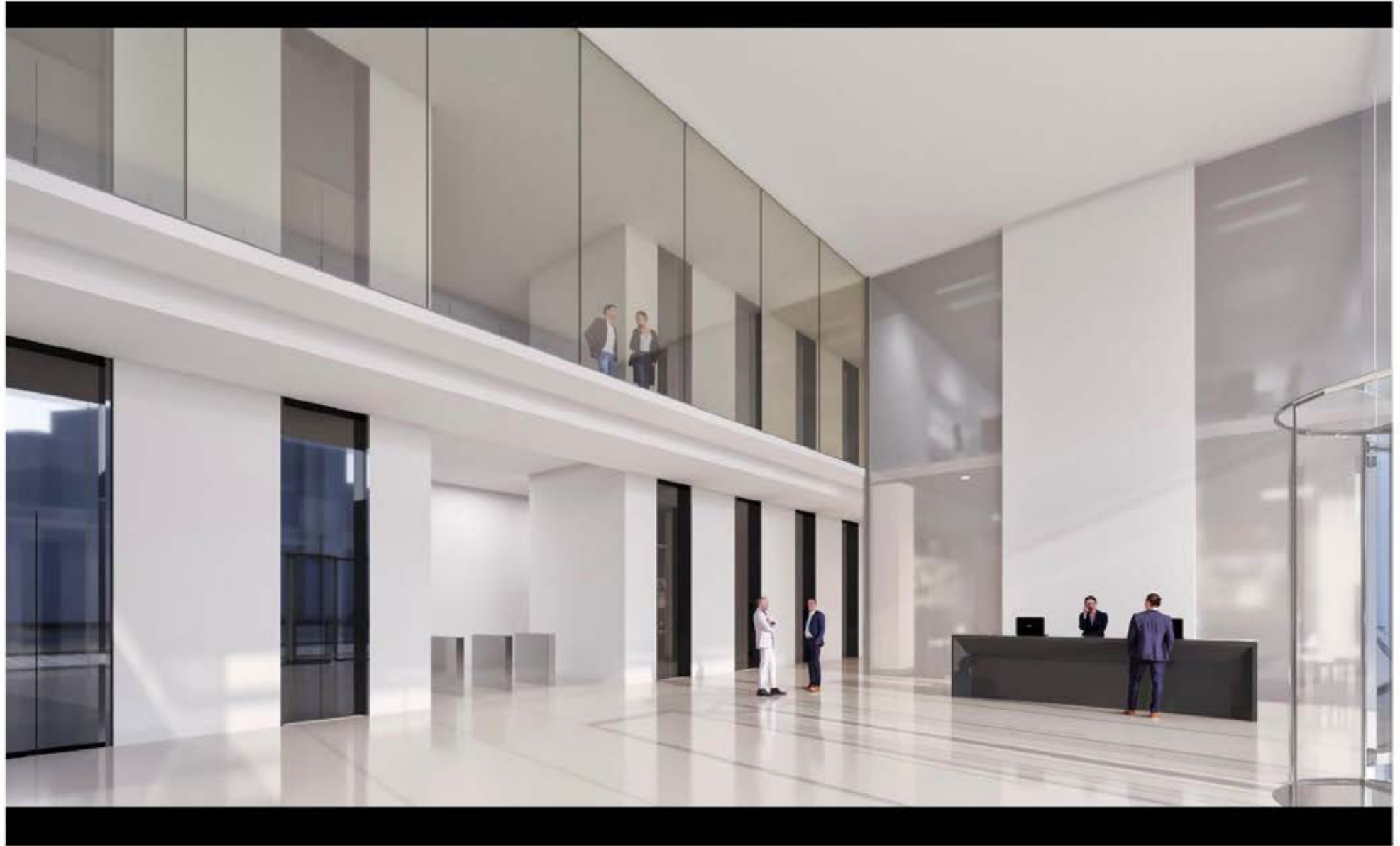


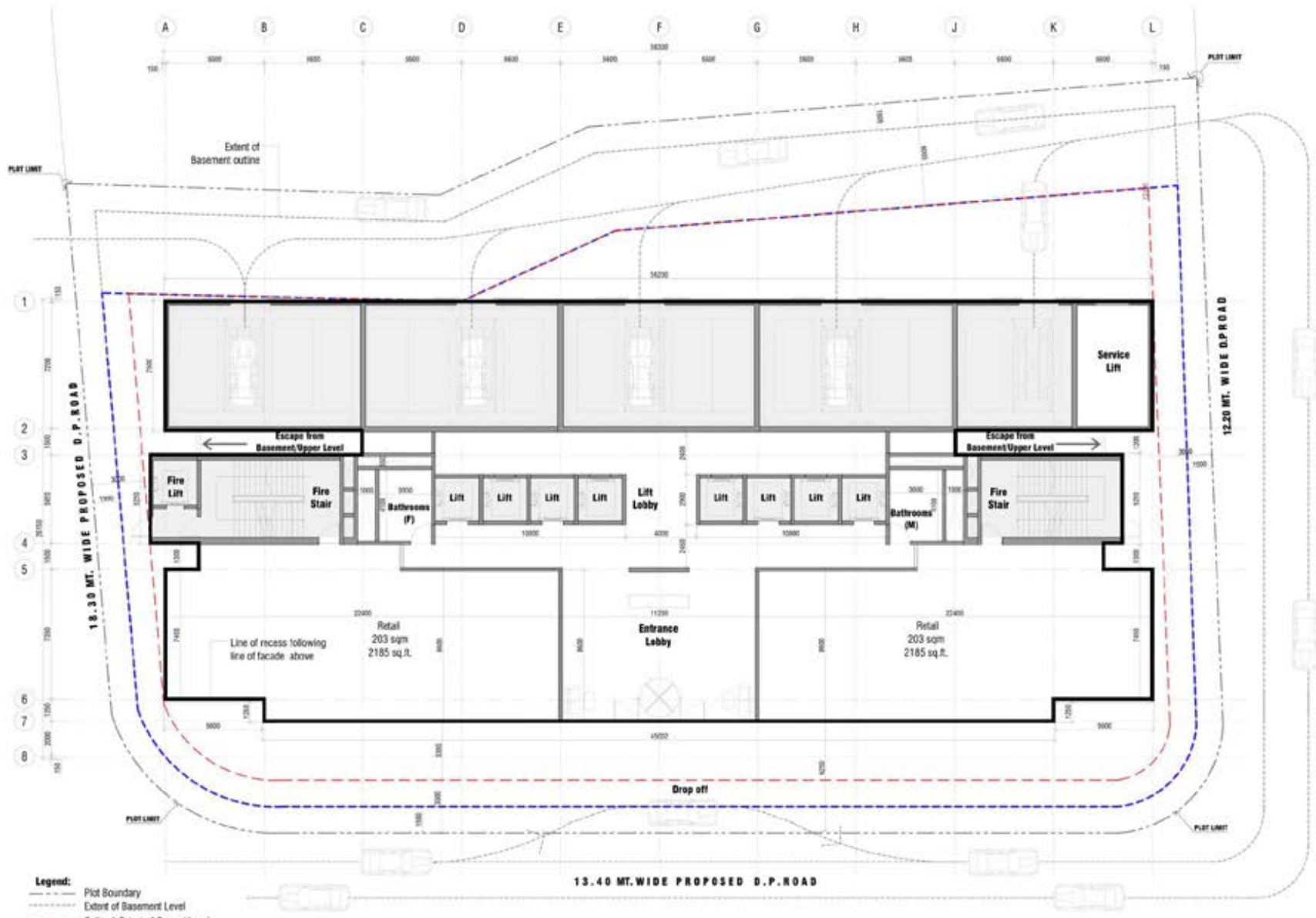








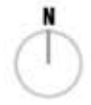




- Legend:**
- - - Plot Boundary
 - - - - Extent of Basement Level
 - - - - Setback Extent of Ground Level
 - - - - Setback Extent of Typical Upper Levels

Buildup Area: 826 sqm
8,891 sqft (Exc. Parking Tower Area)

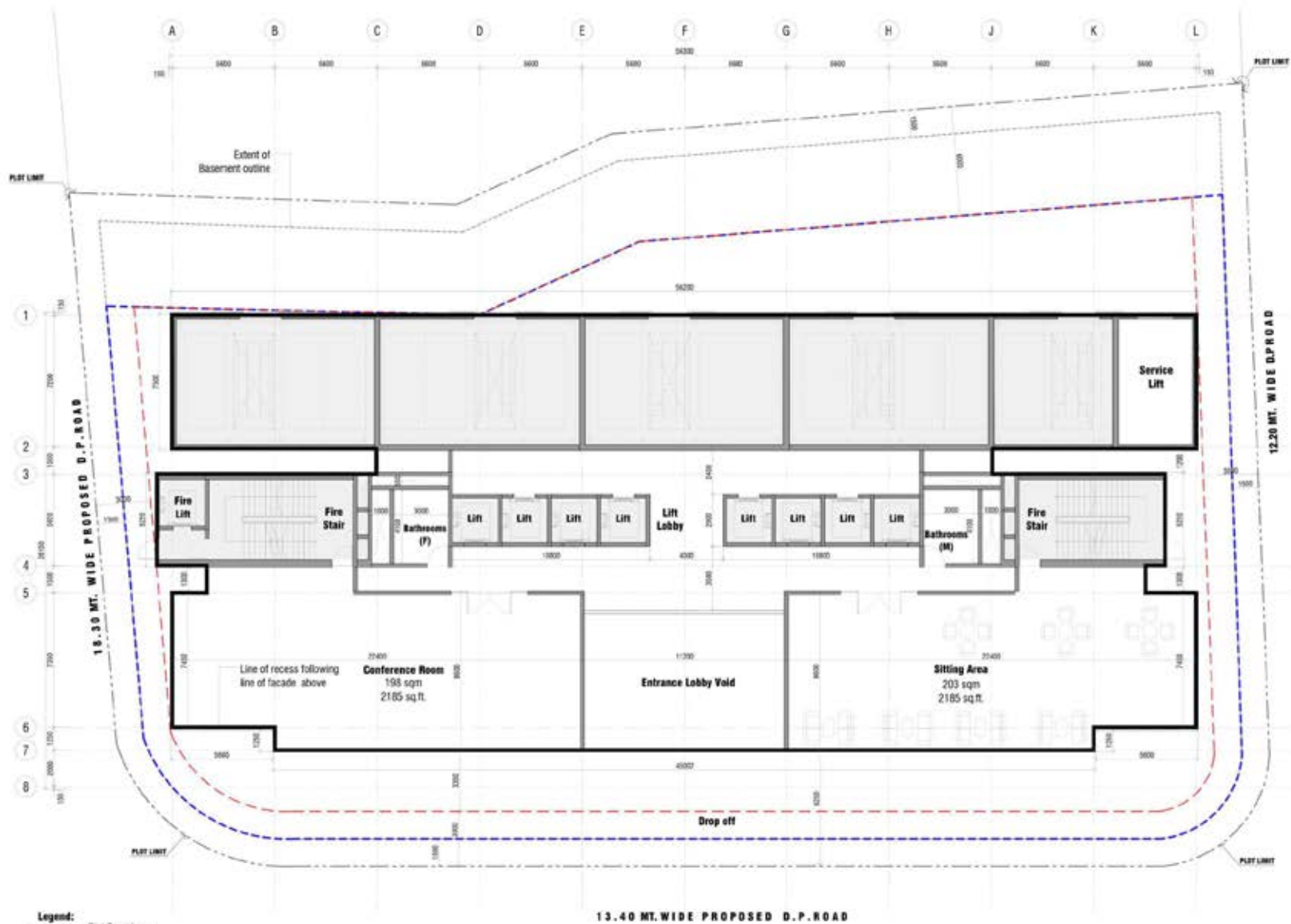
Plot Area: 2,484.73 sqm
26,745.53 sqft



December 2021

Proposed Office Tower

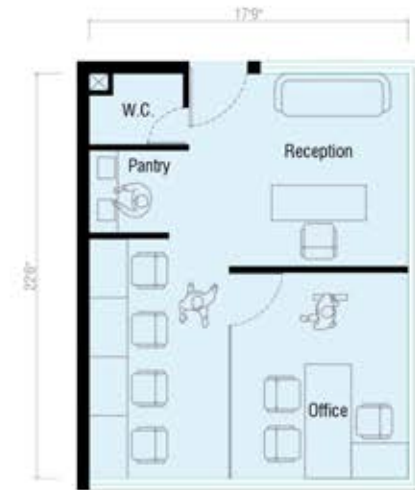
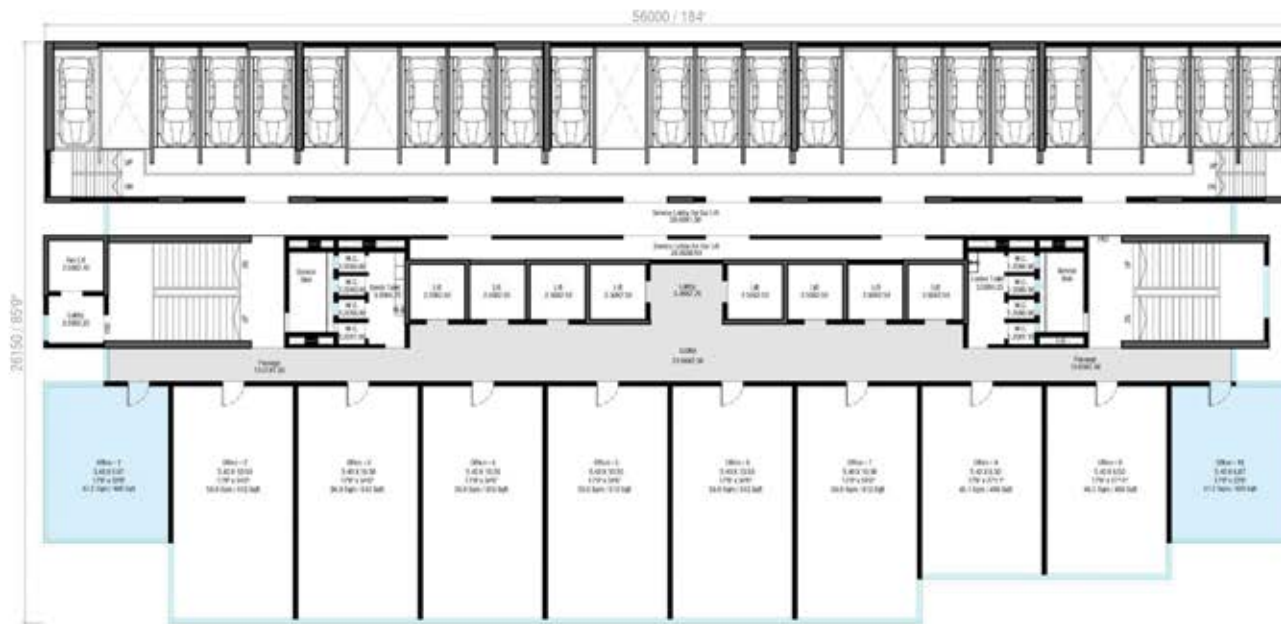
Ground Level Scale- 1:100 A 102



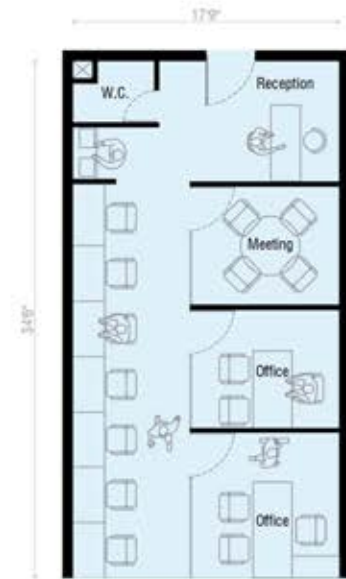
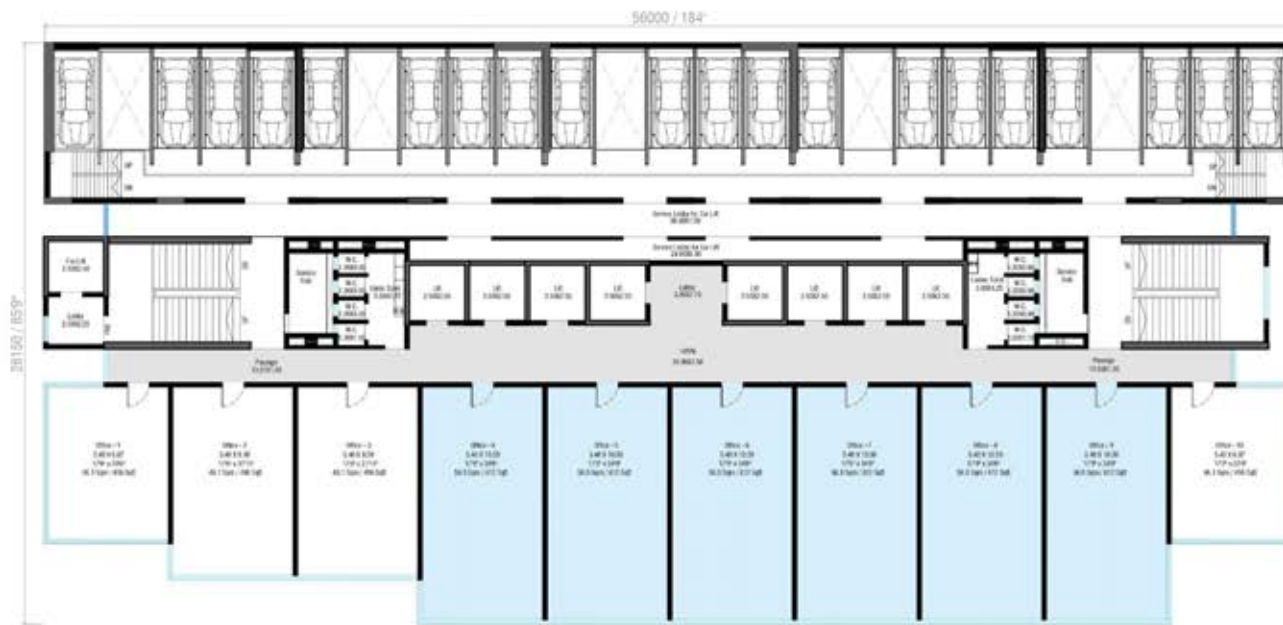
13.40 MT. WIDE PROPOSED D.P. ROAD

Builtup Area: 744 sqm
8,008 sq/ft (Excl. Parking Tower Area)

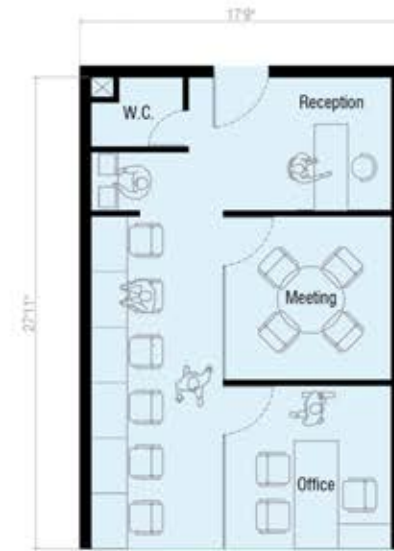
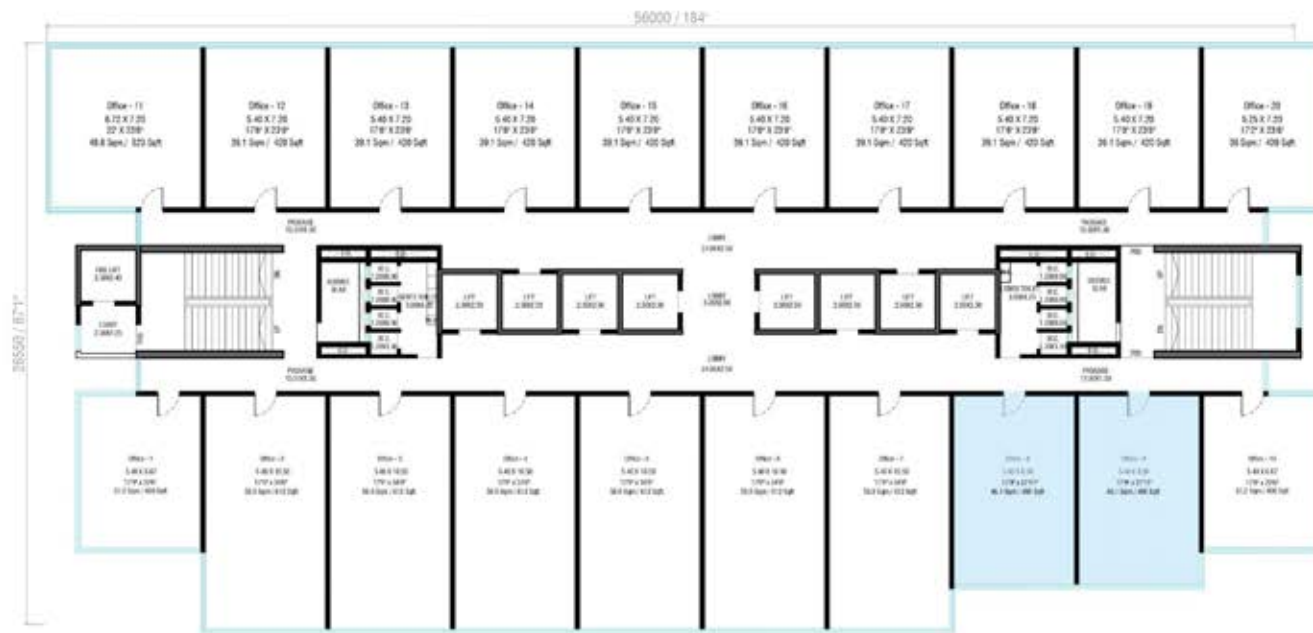




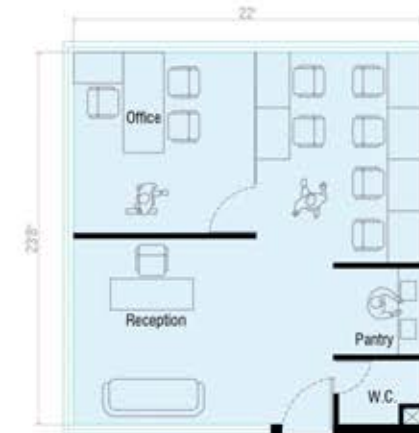
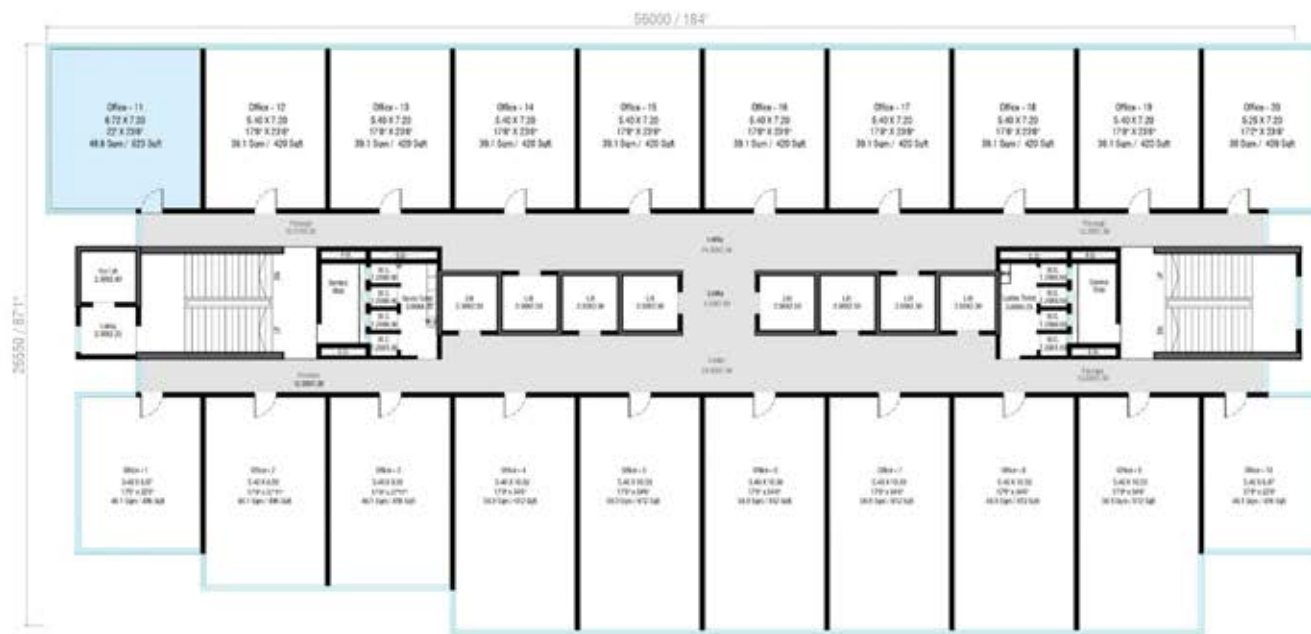
Office Type 1
Carpet Area - 37.3 Sqm / 402 Sqft



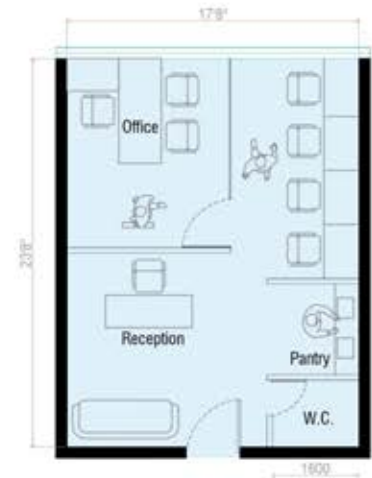
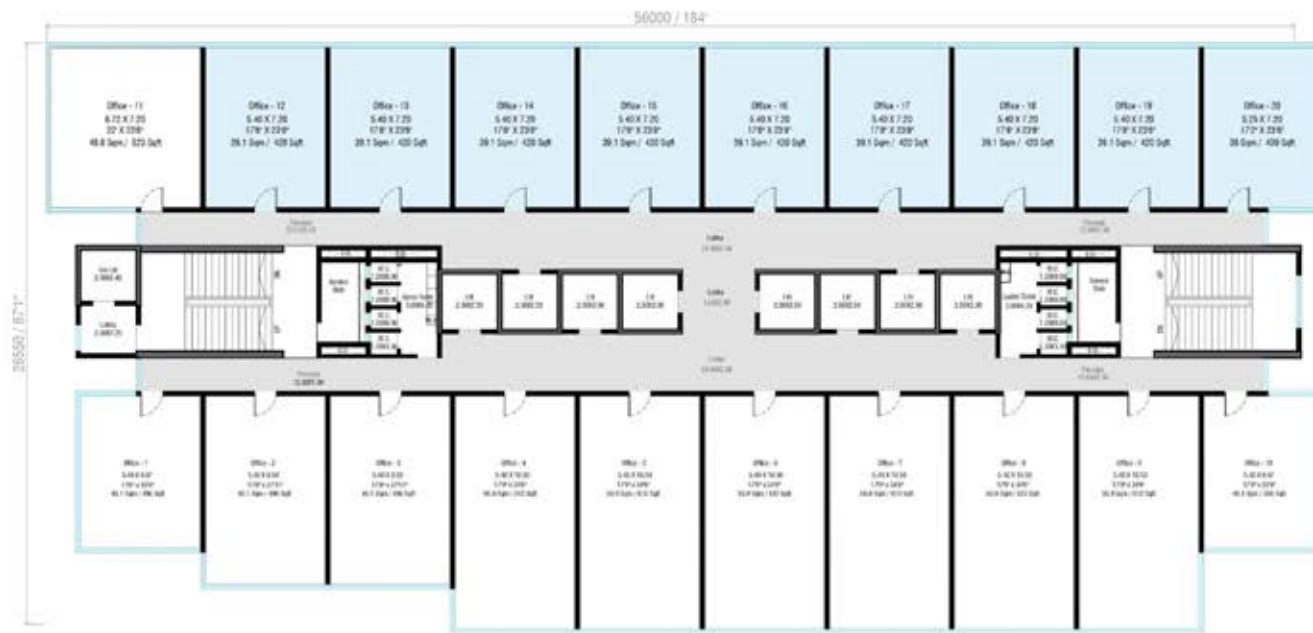
Office Type 2
Carpet Area - 56.9 Sqm / 612.5 Sqft



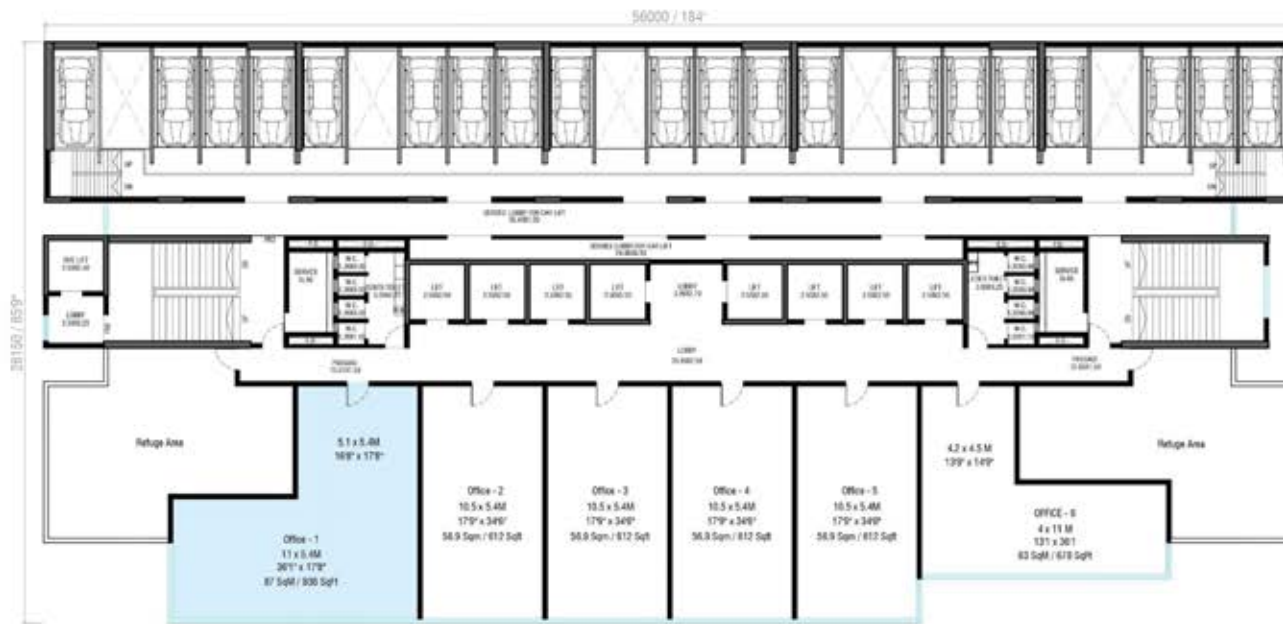
Office Type 3
Carpet Area - 46.1 Sqm / 496 Sqft



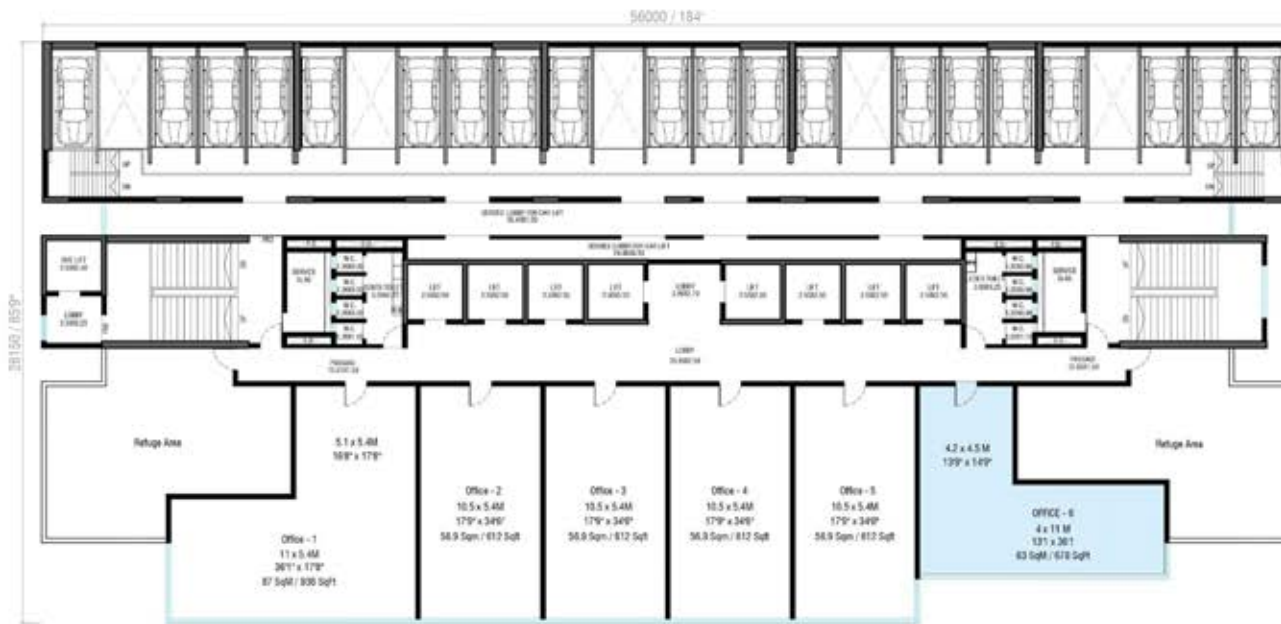
Office Type 4
Carpet Area - 48.6 Sqm / 523 Sqft



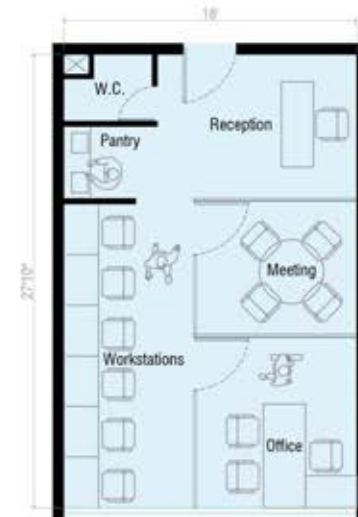
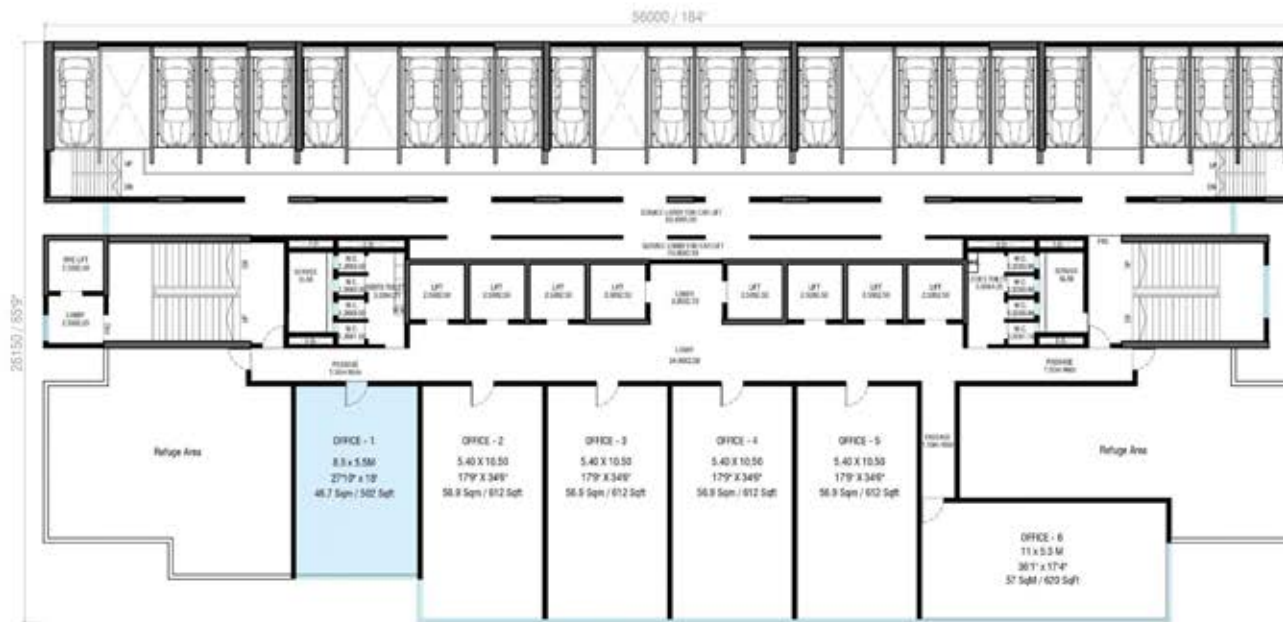
Office Type 5
Carpet Area - 39.1 Sqm / 420 Sqft



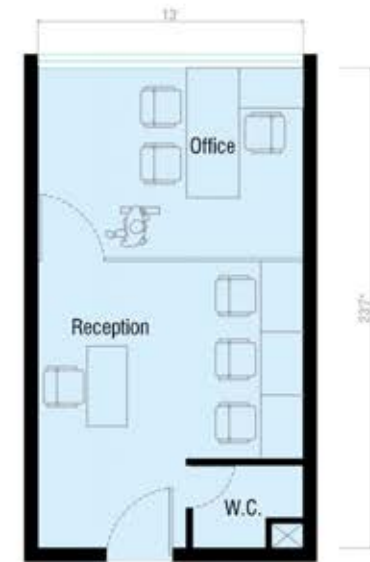
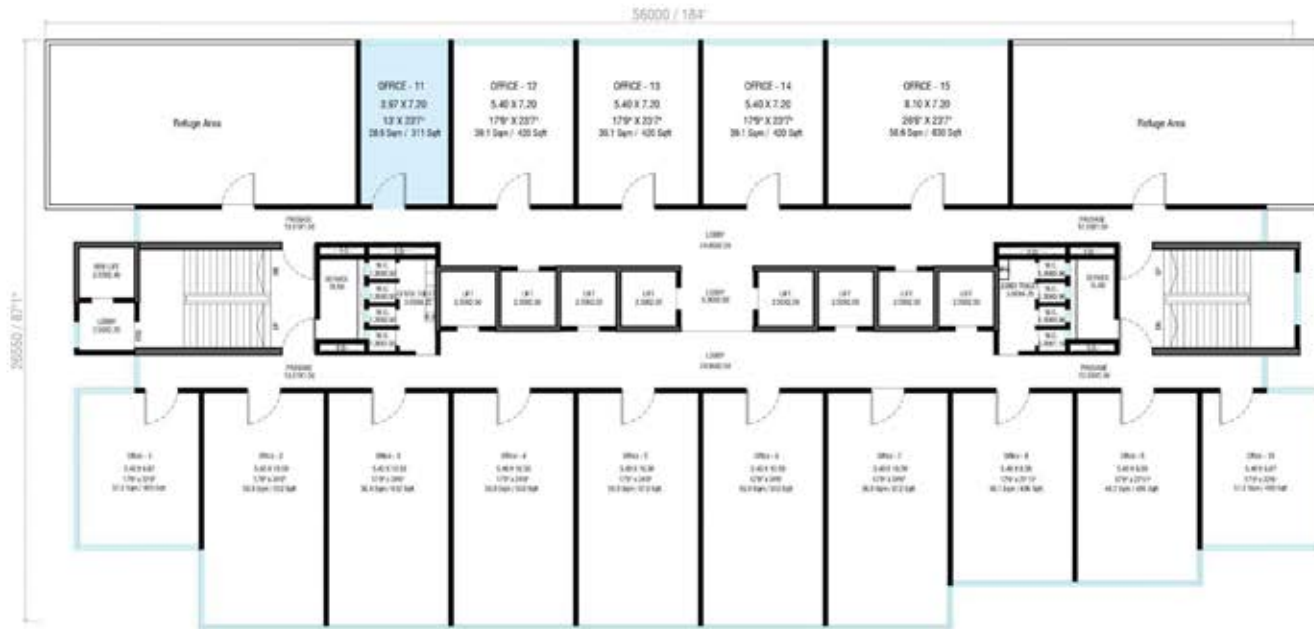
Office Type 6
Carpet Area - 87 Sqm / 936 Sqft



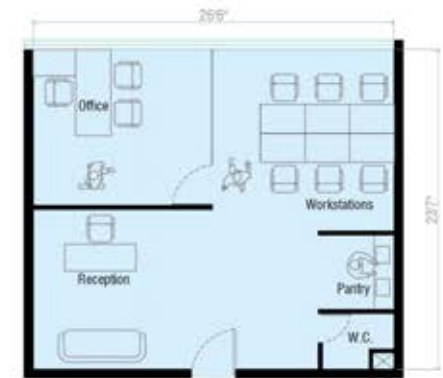
Office Type 7
Carpet Area - 63 SqM / 678 SqFt



Office Type 8
Carpet Area - 46.7 Sqm / 502 Sqft



Office Type 10
Carpet Area - 28.9 Sqm / 311 Sqft



Office Type 11
Carpet Area - 58.6 Sqm / 630 Sqft