

Codename
SKYRISE
Kandivali West



Artist's Impression

LET THE SKY BECOME YOUR NEW NEIGHBOUR AT KANDIVALI'S FINEST LANDMARK.

2 & 3 Bed Premium Residences with Deck

When others were busy crafting landmarks, we elevated luxury in the sky. It's a sky-side luxury, where rich experiences are created to match your affluent lifestyle. It's extravagant life where bespoke indulgences pamper you and sophisticated interiors leave your guests speechless. Come, be a part of Kandivali's finest skyscraper, where stars align to admire you.

- Magnificent 56 storey skyscraper
- 10 levels of ramp car parking
- 1st habitable floor at about 130 ft. above ground
- Awe-inspiring national park and sea views
- 2 Eco-deck amenities level at 105 ft. above ground
- Innovative and futuristic elevation
- Sky Deck amenities at 617 ft. above ground
- Close to Kandivali railway station

TOP-NOTCH EXPERIENCES DESIGNED TO MEET YOUR SKY-HIGH ASPIRATIONS.

30+ WORLD-CLASS AMENITIES

An epitome of luxury and class invites you to live your every desire. Be it fitness, relaxation, passion or socializing avenues, here you have assortment for your every aspiration. It's an exclusive experience crafted for those who never settle for less.

- Senior Citizen Area
- Kids Play Area
- Sky Cafe
- Learning Center

- Creche
- Swimming Pool
- Medical Center
- Gentlemens Lounge

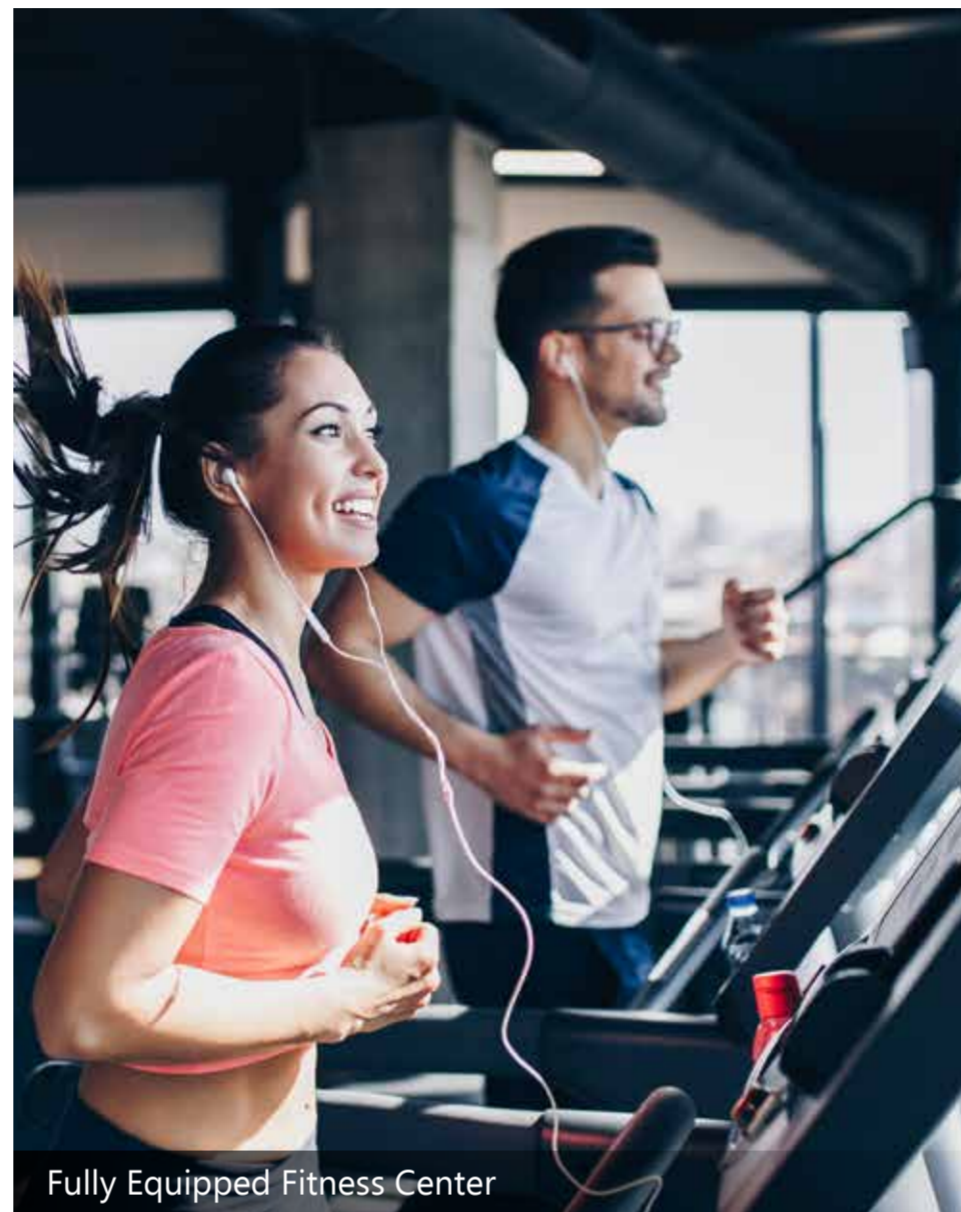
- Spa, Jacuzzi and Steam Room
- Lavish Guest Rooms
- Guest Waiting Lounge
- Dedicated Massage Room

- 24x7 Valet Service
- Simulation Games Room
- Energizing Yoga & Dance Studio
- Swing Garden

INFINITE CHOICES TO PLAY, SOCIALIZE AND ELEVATE YOUR LIFESTYLE



Elegant Business Lounge



Fully Equipped Fitness Center



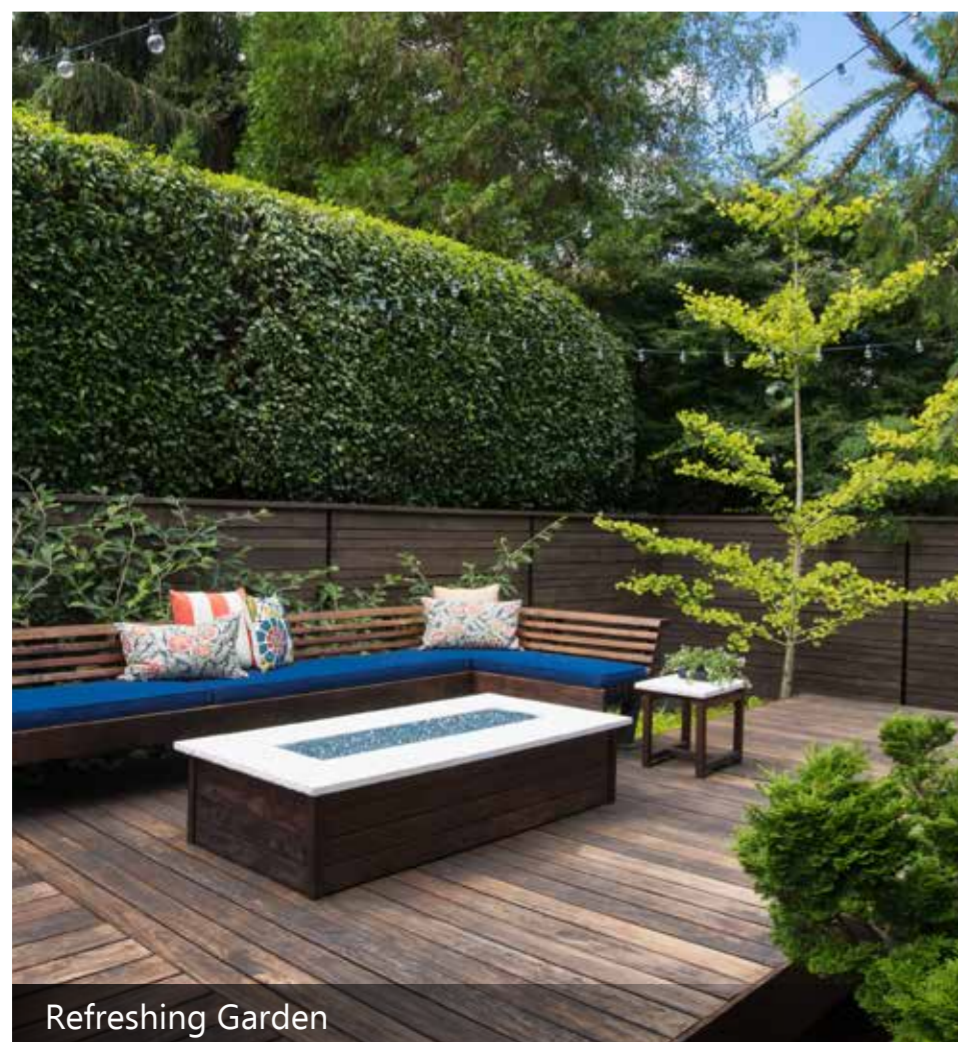
Indulging Clubhouse



Beauty Salon



Multipurpose Hall



Refreshing Garden



BBQ Zone



Grand Reception

Reference Images

LUXURIOUS RESIDENCES CREATED TO LEAVE A LASTING IMPRESSION

Experience the art of fine living while you admire the clear blue skies beside you. Each residence at codename Skyrise is designed to maximise your living space and enrich the quality of your life.

APARTMENT FEATURES

- Fire retardant laminated main door
- High quality vitrified tiles in living, dining, bedrooms and passage
- Gypsum plaster on all internal walls
- Good quality interior paint
- Aluminium sliding windows
- Provision for ACs in living, dining and bedrooms
- Provision for internet and DTH
- Anti-skid tiles in balcony

BATHROOM AMENITIES

- Wall tiles upto door height
- Anti-skid tiles in flooring
- Branded plumbing fittings (Jaquar or equivalent)
- Concealed plumbing with CPVC Pipe
- Premium CP & sanitary fitting
- Provision for geyser and exhaust

KITCHEN AMENITIES

- Vitrified wall tiles upto door height
- High quality vitrified tiles in flooring
- Provision for gas connection, exhaust fan and water purifier

SAFETY AND SECURITY SYSTEM

- Safety railing in balcony
- Smart door lock system
- Smartly designed fire sprinkler in every apartment

BUILDING AMENITIES

- 5 high speed elevators across all floors with additional lift for podiums access
- Driver's waiting lounge facilities
- Digital society management system

HOME FOR ALL FEATURES

- Ramp facility for easy accessibility
- Differently abled friendly access premises
- Power backup for common areas



ELEVATING MUMBAI'S SKYLINE WITH OUR ICONIC LANDMARKS

Shreeji Sharan Group Of Companies is recognized for its innovative creations, customer centric approach and quality construction. With a team of qualified and experienced professionals, Shreeji Sharan Group of Companies has delivered some of the finest residential properties in suburban Mumbai's prime locations.

CODENAME:
SKYRISE

Kandivali (West)

MahaRera: P51800032149

**DAIVI
ETERNEETY**

Borivali (West)

MahaRera: P51800029609

**SHREEJI
PARADISE**

Kandivali (West)

MahaRera: P51800016573

MADONNA

Borivali (West)

MahaRera: P51800010569

**VICTORY
HEIGHTS**

Borivali (West)

MahaRera: P51800009567

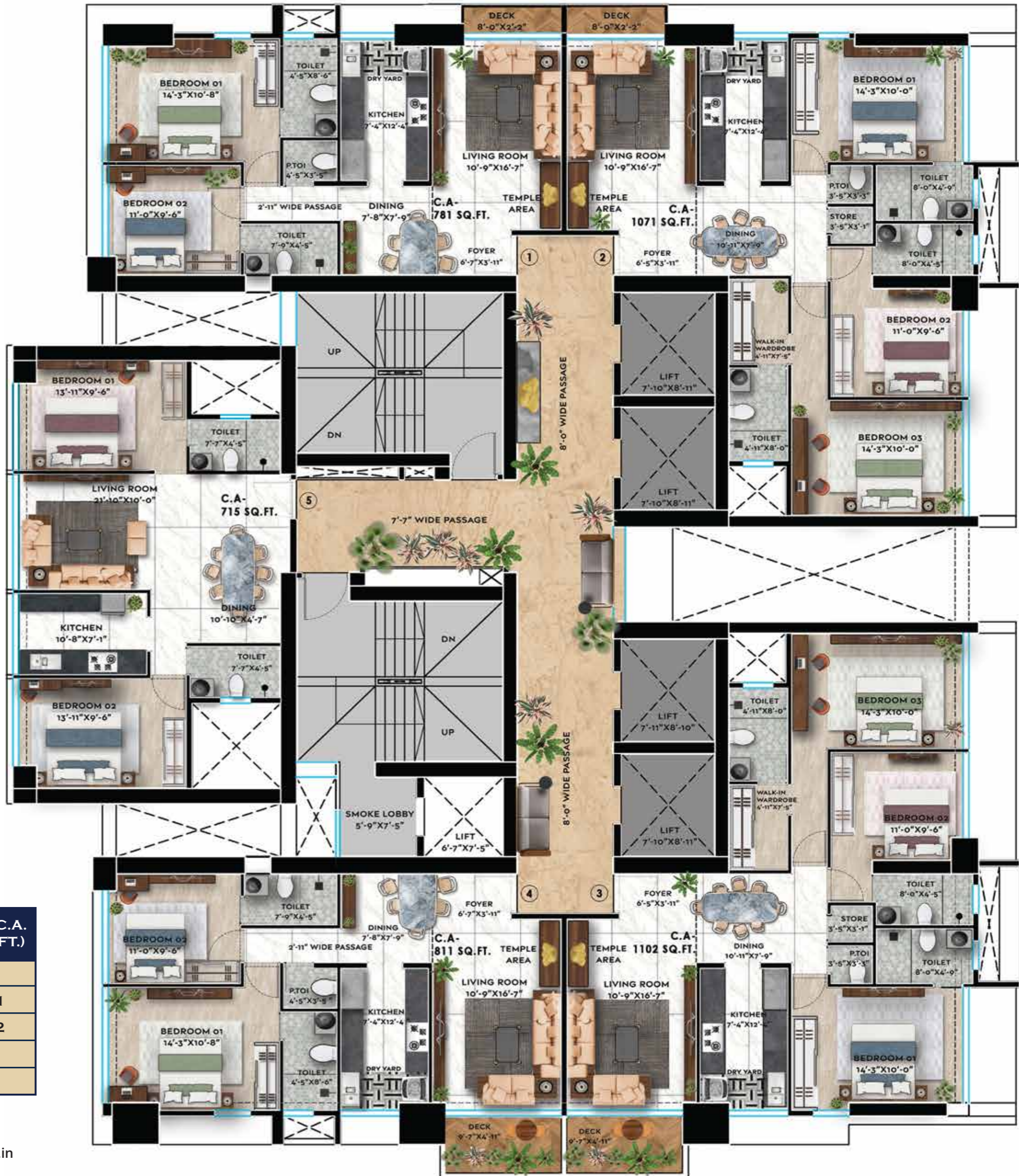
**ROYAL
SAMARPAN**

Kandivali (West)

MahaRera: P51800006923



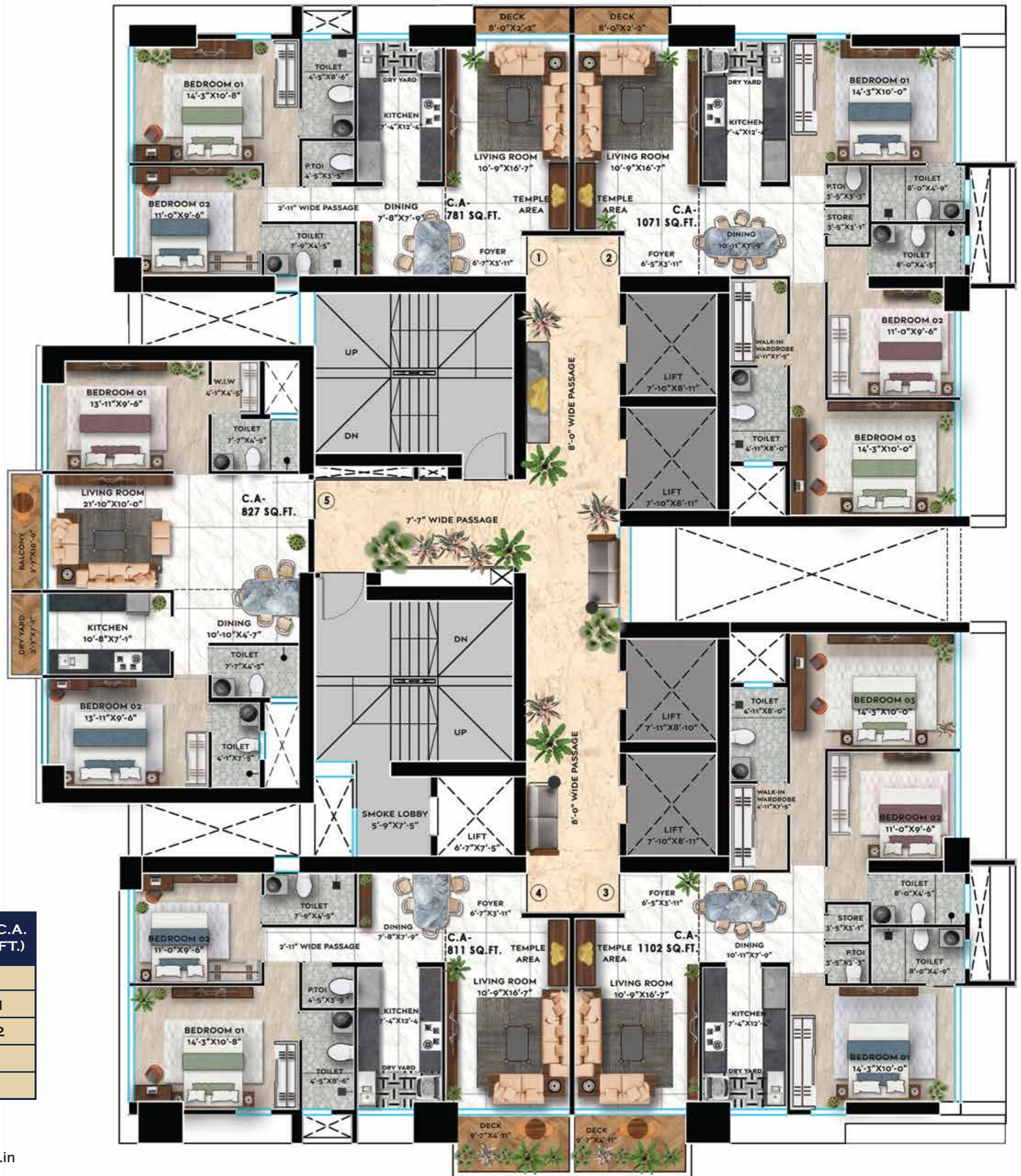
THOUGHTFULLY PLANNED
LAYOUT TO ENSURE
MORE SPACE.



Typical Lower Floor Plan

UNIT NO.	CONFIGURATION	RERA C.A. (IN SQ. FT.)	BALCONY AREA (IN SQ. FT.)	TOTAL C.A. (IN SQ. FT.)
01	2BHK WITH BALCONY	764	17	781
02	3BHK WITH BALCONY	1,054	17	1,071
03	3BHK WITH BALCONY	1,055	47	1,102
04	2BHK WITH BALCONY	764	47	811
05	2BHK	715	-	715

THOUGHTFULLY PLANNED
LAYOUT TO ENSURE
MORE SPACE.



15th Floor onwards | Typical Upper Floor Plan

UNIT NO.	CONFIGURATION	RERA C.A. (IN SQ. FT.)	BALCONY AREA (IN SQ. FT.)	TOTAL C.A. (IN SQ. FT.)
01	2BHK WITH BALCONY	764	17	781
02	3BHK WITH BALCONY	1,054	17	1,071
03	3BHK WITH BALCONY	1,055	47	1,102
04	2BHK WITH BALCONY	764	47	811
05	2BHK WITH BALCONY	781	46	827

STRATEGIC LOCATION TO SHOP, SOCIALIZE AND CONNECT.



- Country Club... 0.9 km
- MCA Club... 2.2 km
- Poisar Gymkhana... 1.5 km



- Growth 101 Mall... 3.2 km
- PVR Milaap... 1.2 km
- Dmart... 2.2 km



- Shree Kala Hanuman Temple... 0.5 km
- Shri Swami Narayan Temple... 0.7 km
- Manisuvrat Jain Derasar... 0.6 km



- Link Road... 2.0 km
- Kandivali Railway Station... 0.3 km
- Western Express Highway... 2.8 km



- ACE Heart Hospital... 0.2 km
- Namaha Hospital... 1 km
- KHM Hospital... 0.6 km



- SVI School & Jr College... 0.7 km
- Thakur International School... 1.7 km
- Shri T P Bhatia College... 0.9 km

Design Architect
The Design Studio

Liasioning Architect
Archview Associates

RCC Consultant
SACPL

M.E.P. Consultant
MakMep Consultant

Site Address: Opp Kandivali Fire Station, S.V. Road, Kandivali West, Mumbai 400 067.

Disclosure: The brochure does not constitute an offer and/or acceptance and/or contract and/or agreement and/or transaction and/or any intention thereof and/or a disclosure under any statute of any nature whatsoever. All specifications, images, plans, designs, facilities, amenities, dimensions, elevations or any other information contained herein are a creative imagination and are for representative purposes only. The same may be subject to changes/ revisions/ alterations in terms of approvals, orders, directions and/or regulations of the concerned/relevant authorities, and/or for compliance with laws/regulations in force from time to time. For private circulation only. Conditions Apply.



MahaRERA REGISTRATION NO. P51800032149 <http://maharera.mahaonline.gov.in>



SHREEJI SHARAN
GROUP OF COMPANIES